

# ROADMAP FOR INCOMING STUDENTS



**SDA Bocconi**  
SCHOOL OF MANAGEMENT

Buongiorno!

First of all, let us, once more, say: well done! You successfully underwent our admissions process, confirmed your enrolment and are now part of SDA Bocconi Community. We are very sure your experience here will be a special one from all perspectives: your classmates, your faculty, our Campus and City. And so much more.

We now want to move on to an essential and, maybe, less exciting aspect of your journey: the administrative side of things. The more you familiarize yourself with them, the easier it will be to navigate, and you'll soon be able to focus on fully enjoying your experience here.

To make this process as smooth as possible, we are sharing a clear roadmap with you, outlining the key steps to follow, along with helpful resources.

This includes links from YESMILANO, the official Welcome Desk of the City of Milano, supported by the Municipality of Milan and the Chamber of Commerce, designed to help international students settle into their new environment.

Let's get started!

Arrivederci!

**VALENTINA GRASSI, ALICE DEALESSI**

SDA International Students Care



Valentina Grassi



Alice Dealessi

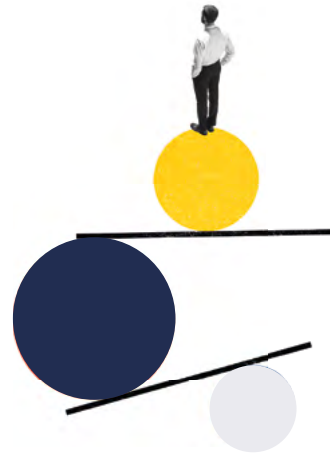


**IN THE HEART OF  
EUROPE, THE CAMPUS  
IS JUST A SHORT  
WALK FROM THE  
CENTER OF MILAN,  
ITALY'S FINANCIAL AND  
ECONOMIC CAPITAL,  
AND THE CRADLE OF  
ITALIAN CULTURE AND  
LIFESTYLE.**

**MILAN**

**Campus SDA Bocconi**  
Via Sarfatti, 10

# BEFORE ARRIVAL



## VISA

**WHO NEEDS IT:** all non-EU citizens must apply for a 12-month study visa (preferably a Type D Multiple Entry Schengen Visa)

**APPLICATION PROCESS:**

- Confirm requirements with the [Visa Calculator](#).
- Applications can typically be made 90 days before your program starts.
- Processing time: about 4 weeks but can take longer - verify with your local Italian Embassy.

**START DATE:** ensure the visa starts close to the program's start date.



## TAX CODE (CODICE FISCALE)

**WHO NEEDS IT:** everyone, no exceptions

**PURPOSE:** a lifetime alphanumeric code required for opening a bank account, applying for health services, signing contracts, etc.

**APPLICATION PROCESS:**

- Apply directly through the [Revenue Agency website](#).
- You can, also, follow the application procedure at this [link](#)

Please note: the tax code you can see in the portal during the admission process is not the official one but it is a placeholder, automatically generated for internal use. To obtain the official one, you must request it from the Italian Revenue Agency.

## 3

## HEALTH INSURANCE

**EU CITIZENS:**

- Bring your European Health Insurance Card (EHIC) for state-provided healthcare.
- Optionally apply for Form S1 to access extended coverage

**NON-EU CITIZENS:**

- Obtain health insurance with international validity covering your entire stay.
- Most students use [WAI Italy](#), which meets permit-to-stay requirements.

## 4

## ACCOMMODATION

**WHO NEEDS IT:** everyone

**APPLICATION PROCESS:** all housing information is available on MyApplication portal. We highly recommend contacting our housing consultant to begin your search.

## 5

## LEARNING DIFFICULTIES

To make your experience smoother, it is essential that you inform us if you have any learning needs and feel completely comfortable in sharing such info with us. This will allow the School to better support you and provide any necessary assistance. Do not hesitate to reach out; we are here to help.

## 6

## LEARNING THE ITALIAN LANGUAGE

**IT'S A TRUTH:** learning Italian will greatly enhance your experience and integration into daily life in Italy. Most importantly, it will also make navigating your professional life easier.

This is why we strongly recommend that you start learning Italian before your arrival. How? You might consider enrolling in an intensive, in-person Italian language course in your home country or exploring the many online resources available to help you begin.

On a more general note, SDA Bocconi offers online Italian language courses that typically start about one month before the beginning of the Program for which your regular attendance is highly recommended.

# UPON ARRIVAL IN MILAN



## PERMIT TO STAY

**WHO NEEDS IT:** non-EU citizens must apply within 8 working days of arrival.

**APPLICATION PROCESS:**

- Collect forms from the post office (Poste Italiane), [here](#) to locate them.
- Submit required documents at the Immigration Office (Questura).
- Full details are available [here](#).



## DECLARATION OF PRESENCE

**WHO NEEDS IT:** Non-EU students coming from a EU country to Italy

**FROM NON-SCHENGEN COUNTRIES:** entry stamp by Italian Border Police suffices.

**MORE INFO:** [here](#)



## OPENING A BANK ACCOUNT (OPTIONAL)

**BENEFITS:** simplifies transactions, rent payments, and scholarship disbursements.

**REQUIRED DOCUMENTS:** passport, Codice Fiscale, residence permit, and proof of address.





## NATIONAL HEALTH SERVICE (SSN)

**COVERAGE:** students can enroll in the Italian National Health Service (NHS) at a reduced annual fee, either as an alternative to or in addition to private health insurance. This provides access to free or low-cost healthcare services, including general practitioner visits, emergency care, and diagnostics.

**STRONG RECOMMENDATION:** enroll even if you have private insurance. Failure to do so can result in a lack of medical coverage, which could become problematic in case of illness or emergency. Make this a priority as part of your staying in Italy.

**MORE INFO:** [here](#)



## RESIDENCY REGISTRATION

**WHO NEEDS IT:** anyone planning to settle in Milan or elsewhere in Italy.

**PURPOSE:** enrollment in the city's population registry, required to convert study permits into work permits upon receipt of a job offer.

**REQUIREMENTS:** a valid housing contract and supporting documents.

**MORE INFO:** [here](#)



## SPID

**PURPOSE:** SPID (Sistema Pubblico di Identità Digitale) enables access to Italian public services online.

**ELIGIBILITY:** Italian citizens or foreign residents with an Italian ID.

**MORE INFO:** [here](#)

# CHECKLIST

- ☐ **VISA**
- ☐ **TAX CODE**
- ☐ **HEALTH INSURANCE**
- ☐ **ACCOMODATION**
- ☐ **PERMIT TO STAY**
- ☐ **DECLARATION OF PRESENCE**
- ☐ **OPENING A BANK ACCOUNT**
- ☐ **NATIONAL HEALTH SERVICE**
- ☐ **RESIDENCY REGISTRATION**
- ☐ **SPID**





## SDA Bocconi School of Management

Via Sarfatti, 10 - 20136 Milano, Italy  
tel +39 02 5836 6605-6606  
email: [info@sdabocconi.it](mailto:info@sdabocconi.it)  
[www.sdabocconi.it](http://www.sdabocconi.it)

## Follow SDA Bocconi

